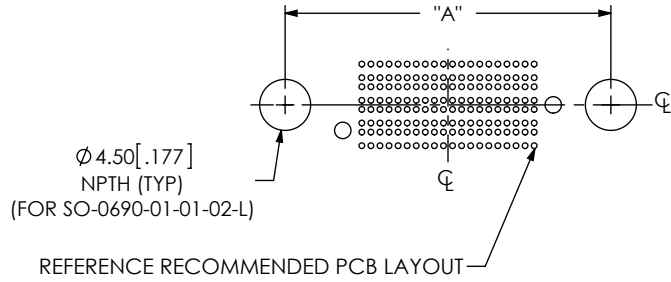


RECOMMENDED LAYOUT FOR THE SEAX8 SCREW DOWN OPTIONS  
(4.50 [.177] HOLES CENTERED ON SEAX8 LAYOUT)

DO NOT SCALE FROM THIS PRINT

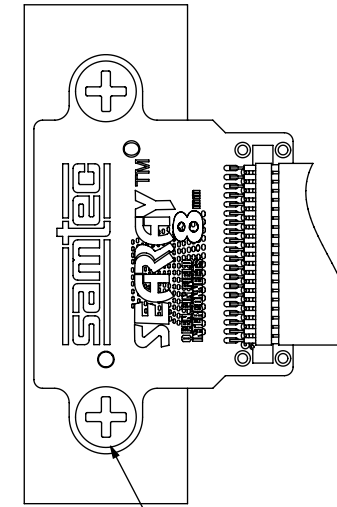


**TABLE 1**

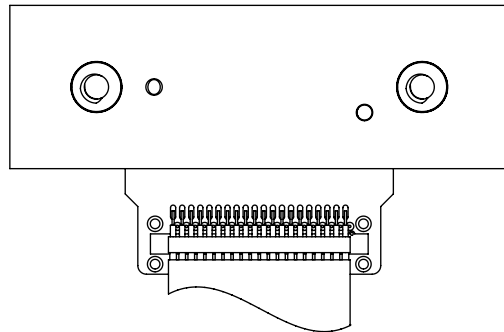
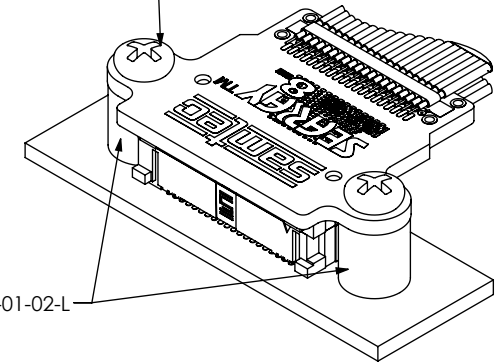
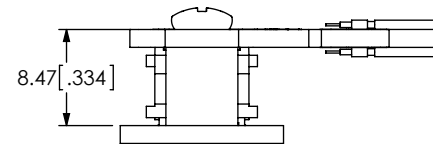
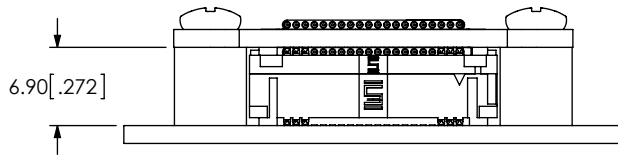
NO OF POS	"A"
-20	28.73 [1.131]
-30	36.73 [1.446]
*-40	44.73 [1.761]
*-50	52.73 [2.076]

(\* = NOT TOOLED)

DESIGNED & DIMENSIONED IN MILLIMETERS [INCHES]



4/40 x 5/16" PHIL. HEAD ROUND MACH. SCREW  
MAX TORQUE 2-4 IN-OZ  
(MAX TORQUE RECOMMENDATION CAN BE INCREASED IF TRANSITION BOARD BOTTOMS OUT ON STANDOFF)



UNLESS OTHERWISE SPECIFIED, DIMENSIONS ARE IN MILLIMETERS. TOLERANCES ARE:  
DECIMALS ANGLES  
X.X:  $\pm 0.3$  [.01] 2°  
X.XX:  $\pm 0.13$  [.005]  
X.XXX:  $\pm 0.051$  [.0020]

**PROPRIETARY NOTE**  
THIS DOCUMENT CONTAINS INFORMATION CONFIDENTIAL AND PROPRIETARY TO SAMTEC, INC. AND SHALL NOT BE REPRODUCED OR TRANSFERRED TO OTHER DOCUMENTS OR DISCLOSED TO OTHERS OR USED FOR ANY PURPOSE OTHER THAN THAT WHICH IT WAS OBTAINED WITHOUT THE EXPRESSED WRITTEN CONSENT OF SAMTEC, INC.



520 PARK EAST BLVD., NEW ALBANY, IN 47150  
PHONE: 812-944-6733 FAX: 812-948-5047  
e-Mail: info@SAMTEC.com code 53322

MATERIAL: DO NOT SCALE DRAWING SHEET SCALE: 3:2

DESCRIPTION: ESCA APPLICATION VIEWS

DWG. NO. ESCA APPLICATION

BY: JESSIE W 2/13/2014 SHEET 1 OF 1